

A Guide to Parental Controls on Samsung Mobile Devices



Galaxy for Families

Embrace technology on your own terms, with Samsung's products and tools built for your family. Get started with Galaxy for Families by creating a Samsung child account. Your journey to set up may vary slightly depending on the model of the device and if you're setting up on a dedicated new or existing device for your child.

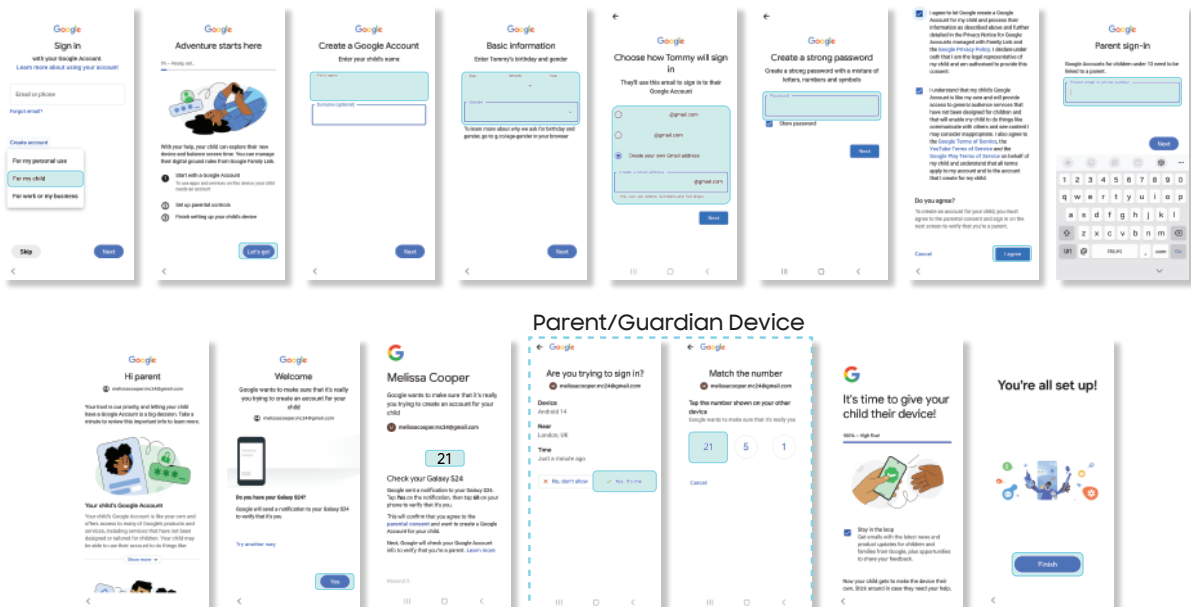
For a New Samsung device

Google Account for your child

Begin by setting up a Google Account for your child **which you can do on their or on your own device**. However, if you create it on your device, you will need to use their details when logging in on their device. This account will be essential to manage settings on various Google services and apps through **Google Family link**. Follow the prompts and choose age-appropriate settings and permissions for your child.

Please note that as the guardian, you will need your own device at hand to authenticate both the Google Account for your child and Samsung Child Account and prove it's you setting up the account. The required credit card details are just to verify it's you. This process allows a more secure and tailored experience for your child while allowing you to oversee their digital journey.

For more information on Google Family Link, click [here](#).

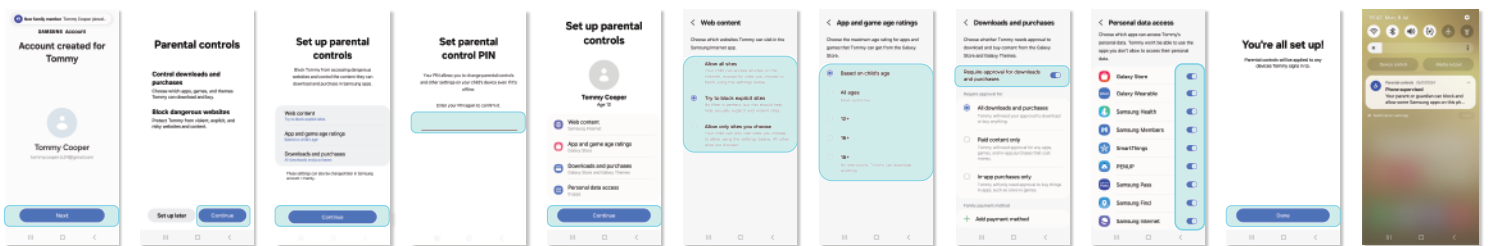


Samsung Child Account

Setting up this account will enable you to manage your child's parental control features in one place. This includes Galaxy for Families features specific to Samsung devices (as well as your child's Google account settings). Customize the settings according to your child's needs and your preferences as a guardian (as well as your child's Google account settings). Customise the settings according to your preferences and your child's needs.

- Follow the next section steps to **create a Samsung account on the parent/guardian device.**
- When prompted during setup of the new child's device, **use their details** to log in to the Samsung Child account.
- Remember that as the guardian, you will need your own device ready to authenticate the Samsung Child Account.
- Continue with device setup.

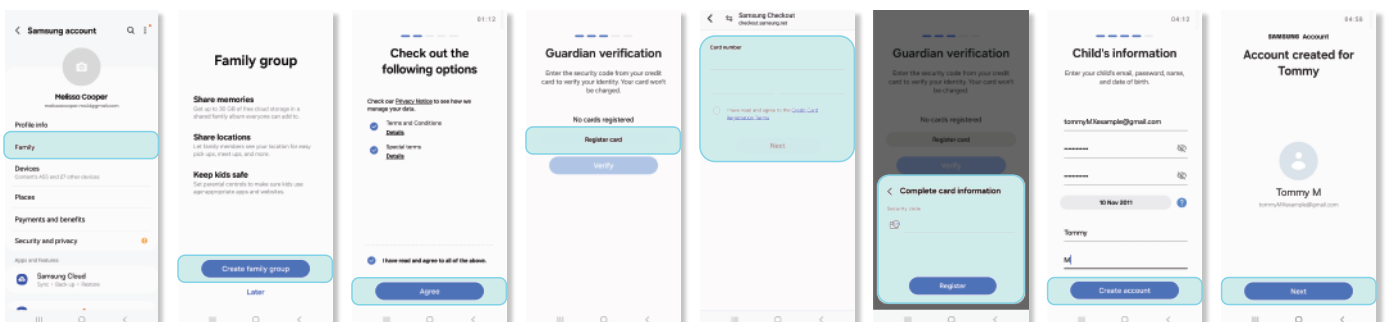
Please note that once the account has been set up, the child will receive a notification letting them know the phone is being supervised by their guardian.



For an existing Samsung Device

If you are using an existing Samsung smartphone or tablet for your child (hand-me-down), we recommend you do a factory reset. To learn how to do this, click [here](#).

After this, you can create a new Samsung Child Account as shown below. **This should be done on the guardian's device, and not on the child's device.**



Galaxy for Families Key Features



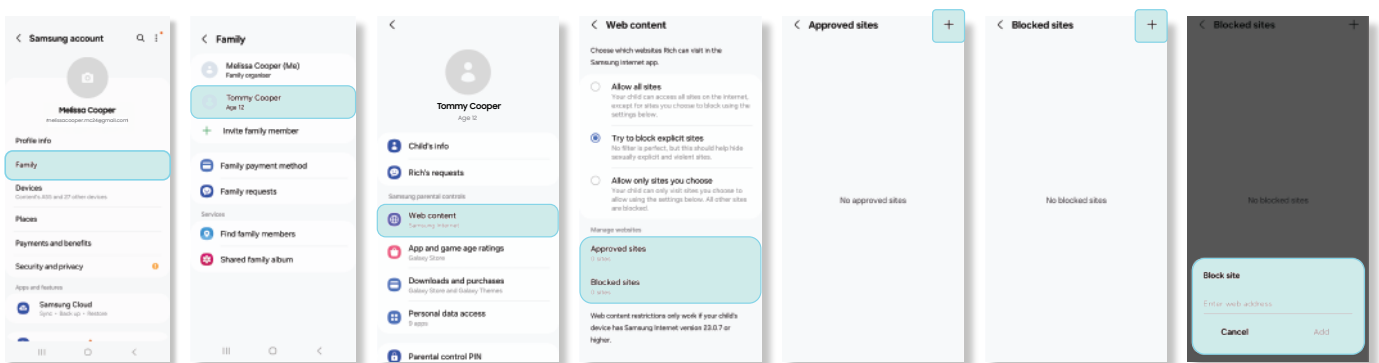
You can manage:

- Website Access (Samsung Internet)
- Apps & Game Age Ratings (Galaxy Store)
- Purchase Restrictions (Galaxy Store)
- Location Sharing (Samsung Find)
- Family Album Sharing
- Google Family Link

Website Access (Samsung Internet)

On your Galaxy for Families Account, select **your child**, then click on Web Content to manage settings on their Samsung Internet browser. You can choose from the following options to manage:

- Allow all sites (no restrictions)
- Allow only sites you choose (most restricted)
- Try to block explicit sites.



Please refer to the Useful Features and Tools Guide to review how you can check your child's Samsung Internet browsing history. Note that Secret Mode is not available while using a Samsung Child Account. To learn more about online safety, click [here](#):

App and Game Age Ratings (Galaxy Store)

You can choose the maximum age rating for apps and games that your child can download from the Galaxy Store based on the child's age (which will be informed by the date you used to set up the Child Account).

You can choose from the following options to manage:

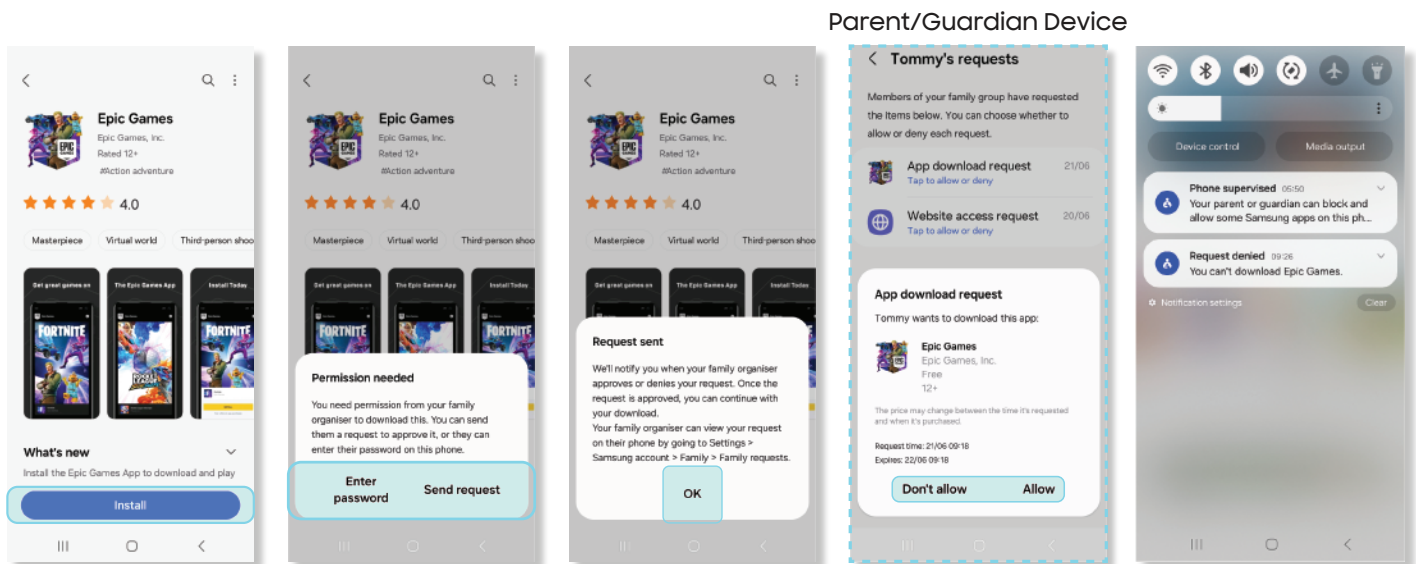
- All ages (most restricted)
- 12+
- 16+
- 18+ (no restrictions)

If you choose to allow your child to download social media apps, or gaming apps, there are parental controls/privacy settings available to set up on each platform. Please check out How To Guides for the different apps.

Social Media Apps Parental Controls tap [here](#).

Gaming Parental Controls tap [here](#).

When trying to download an age restricted app the child will see a message informing them that the app is restricted and that only a guardian can remove the restriction. The guardian will also receive a notification to grant or deny access.



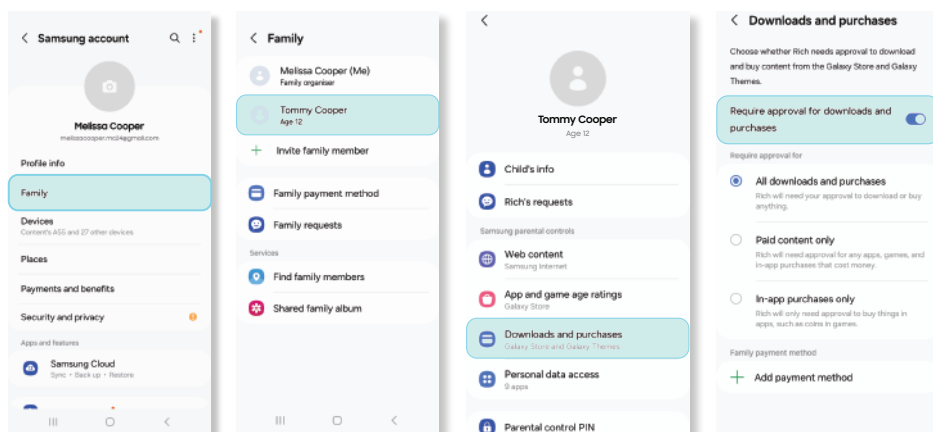
Purchase Restrictions (Galaxy Store)

You have the option to decide whether your child needs permission to download and purchase content from the Galaxy Store.

Simply slide the toggle to the right (so it turns blue) for 'Require approval for download and purchases'.

You can choose from the following options to manage:

- All downloads and purchases (the highest level of protection).
- Paid content only (all free apps will be downloadable without approval).
- In-app purchases only (all apps are downloadable, but only in-app purchases will require permission).



Location Sharing (Samsung Find)

To activate location sharing, you can share location with up to 5 family members using the Samsung Find App, accessible through the Galaxy for Families menu. You can then activate location sharing.

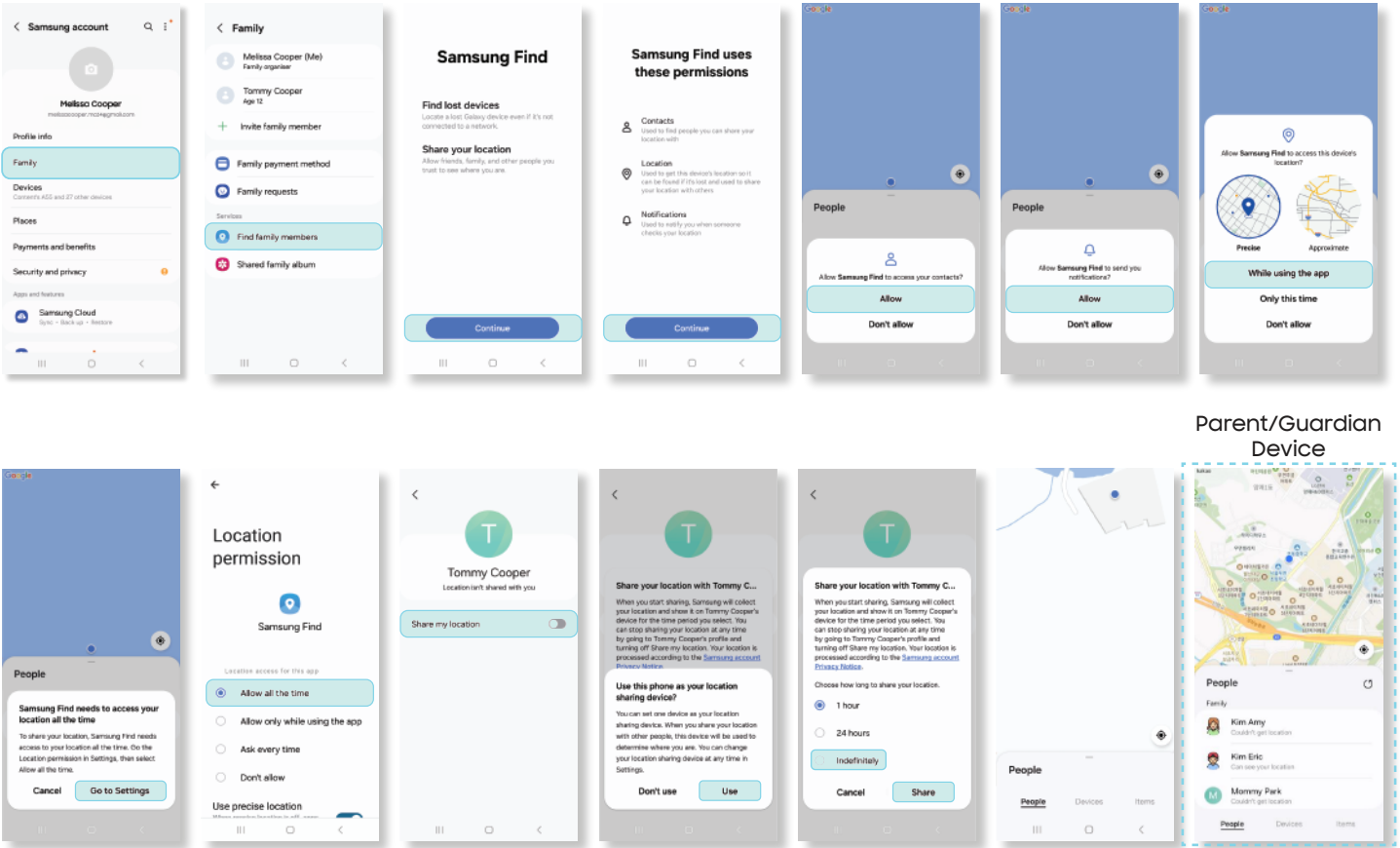
For models released after the Galaxy S24, the Samsung Find app comes preloaded.

If users have never used the Samsung Find app, they will be notified to download it from the Galaxy Store when a location is shared with them by another user.

When Samsung Find user (A) shares a location with a non-Samsung Find app user (B), user B will receive a notification through the group sharing app.

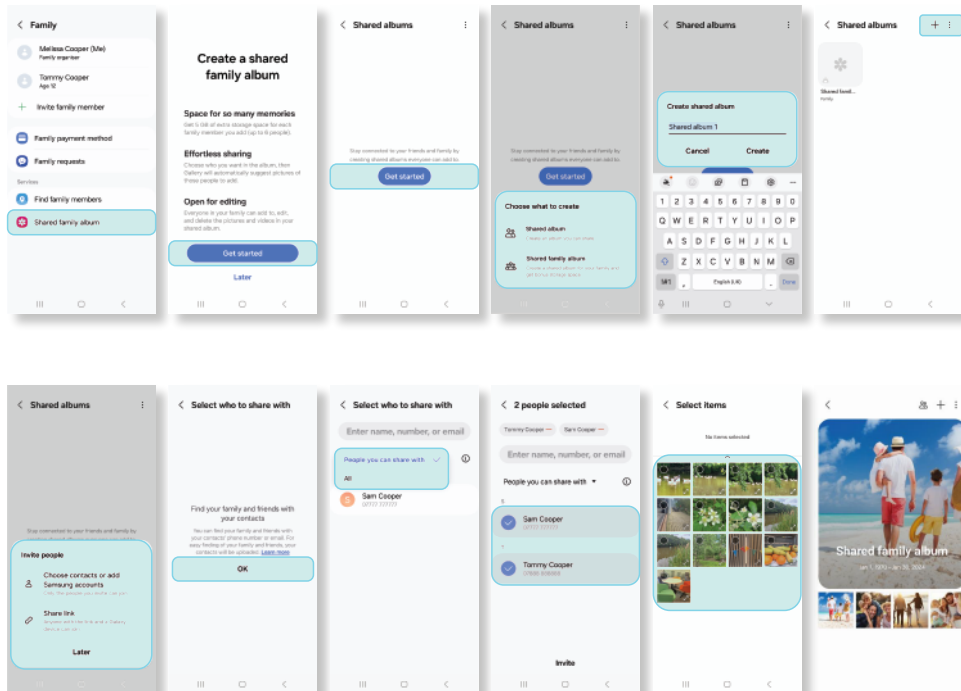
This notification informs user B that user A has requested to share their location.

By tapping on this notification, user B will be directed to the Galaxy Store's Samsung Find app download screen.



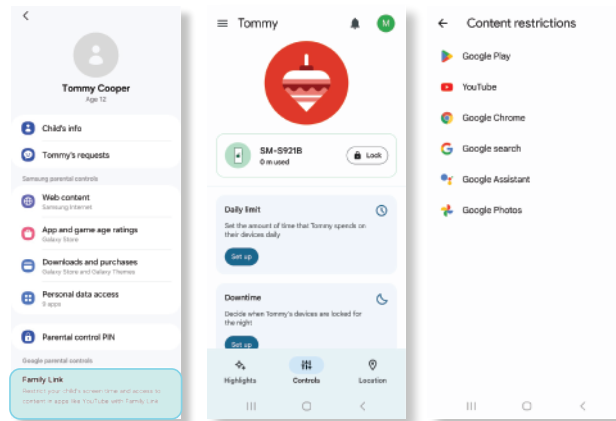
Family Album Sharing

Through linked Samsung Accounts you can also set up a shared photo album and select which family members can view, edit, and contribute to it.



Google Family Link

To manage Google Apps and services you can implement Google parental controls using Google Family Link.

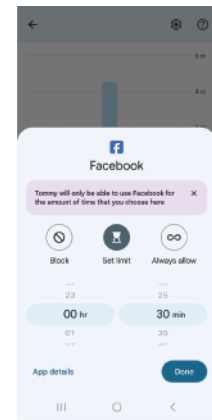
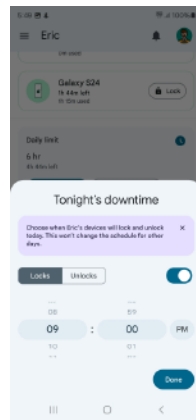
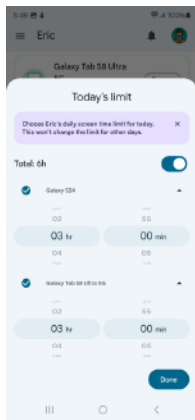


Screen Time

Daily limit: Set the amount of time that you child will spend daily on their device.

Downtime: Set a time for when devices are locked overnight and then available again in the morning.

App limits: Set time limits for each app each day and block apps.



Content Restrictions

You can tailor restrictions to Google apps, manage search results, block sites, etc.:



Google search



Google Assistant



Google Play (app store)



YouTube (choose between YouTube Kids, or YouTube and YouTube Music – parent supervised version).



Google Chrome (choose between allowing all sites, blocking explicit sites or only allowed approved sites),



Google Photos (enabling/disabling photo sharing)

To learn more about Google Family Link, you can click [here](#).

FAQ



What devices offer Galaxy for Families features?

Galaxy for Families features are available on devices operating on OneUI 6.1 and above.

A full list of OneUI 6.1 Samsung devices are below:

Galaxy S24	Galaxy Tab S9+	Galaxy A73 5G
Galaxy S24+	Galaxy Tab S9+ 5G	Galaxy A72
Galaxy S24 Ultra	Galaxy Tab S9	Galaxy A55 5G
Galaxy S23	Galaxy Tab S9 Ultra	Galaxy A54 5G
Galaxy S23+	Galaxy Tab S9 Ultra 5G	Galaxy A53 5G
Galaxy S23 Ultra	Galaxy Tab S9 FE+	Galaxy A53 5G UW
Galaxy S23 FE	Galaxy Tab S9 FE+ 5G	Galaxy A52s 5G
Galaxy S22	Galaxy Tab S9 FE	Galaxy A52
Galaxy S22+	Galaxy Tab S9 FE 5G	Galaxy A52 5G
Galaxy S22 Ultra	Galaxy Tab S9 5G	Galaxy A35 5G
Galaxy S21 5G	Galaxy Tab S8+	Galaxy A34 5G
Galaxy S21+ 5G	Galaxy Tab S8+ 5G	Galaxy A33 5G
Galaxy S21 Ultra 5G	Galaxy Tab S8	Galaxy A25 5G
Galaxy S21 FE 5G	Galaxy Tab S8 Ultra	Galaxy A24
Galaxy Z Fold6	Galaxy Tab S8 Ultra 5G	Galaxy A23
Galaxy Z Fold5	Galaxy Tab S8 5G	Galaxy A23 5G
Galaxy Z Fold4	Galaxy Tab S7 FE	Galaxy A23 5G UW
Galaxy Z Fold3 5G	Galaxy Tab S7 FE 5G	Galaxy A15
Galaxy Z Flip6	Galaxy Tab S6 Lite	Galaxy A15 5G
Galaxy Z Flip5	Galaxy Tab Active5 5G	Galaxy A14
Galaxy Z Flip4	Galaxy Tab Active4 Pro	Galaxy A14 5G
Galaxy Z Flip3 5G	Galaxy Tab Active4 Pro 5G	Galaxy A13
	Galaxy Tab A9+	Galaxy A13 5G
	Galaxy Tab A9+ 5G	Galaxy A05s
	Galaxy Tab A9	Galaxy A05
	Galaxy Tab A8	Galaxy A04s
	Galaxy Tab A7 Lite	Galaxy A04e
		Galaxy A04

Is there anything I can do to set up my (guardian) phone to be safe for my child while they're using it?

In addition to Galaxy for Families, Samsung Kids comes pre-installed on Samsung smartphones designed to create a safe environment, particularly for younger children. Simply go to the Search bar, search for Samsung Kids. You can use the same PIN or biometrics set for your device to enter and exit the app.

You can set limits on playtime, as well as providing access only to specific contacts and apps.

For more information on Samsung Kids visit [here](#) or check out our separate Guide for Samsung Kids [here](#).

Why is Google Family Link not installed on my Samsung device?

If the Google Family Link app is not pre-installed on your Samsung device, you can download this from the Google Play Store.

When you create a Google children's account and log in for the first time on a child's device, the Family Link app will automatically install on the guardian's phone.

If you have created a Google child account outside the child's mobile device (such as on the web on a PC) and log in to the child's phone, the guardian will see a screen to activate Family Link. In this case, Family Link is automatically installed on the guardian's phone or the guardian will need to install Family Link separately using the Play Store on the guardian phone.

For more information on Google Family Link visit [here](#).

I'm struggling with the set up. Who can I contact?

Please get in touch with us. We're here to help.

Visit : www.samsung.com/uk/support/contact

Call us : 0333 000 0333

Live Chat : www.samsung.com/uk/support/chat-members

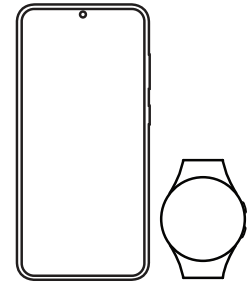
Sign Language Support : www.samsung.com/uk/support/contact/accessibility

SAMSUNG

SOS Messages

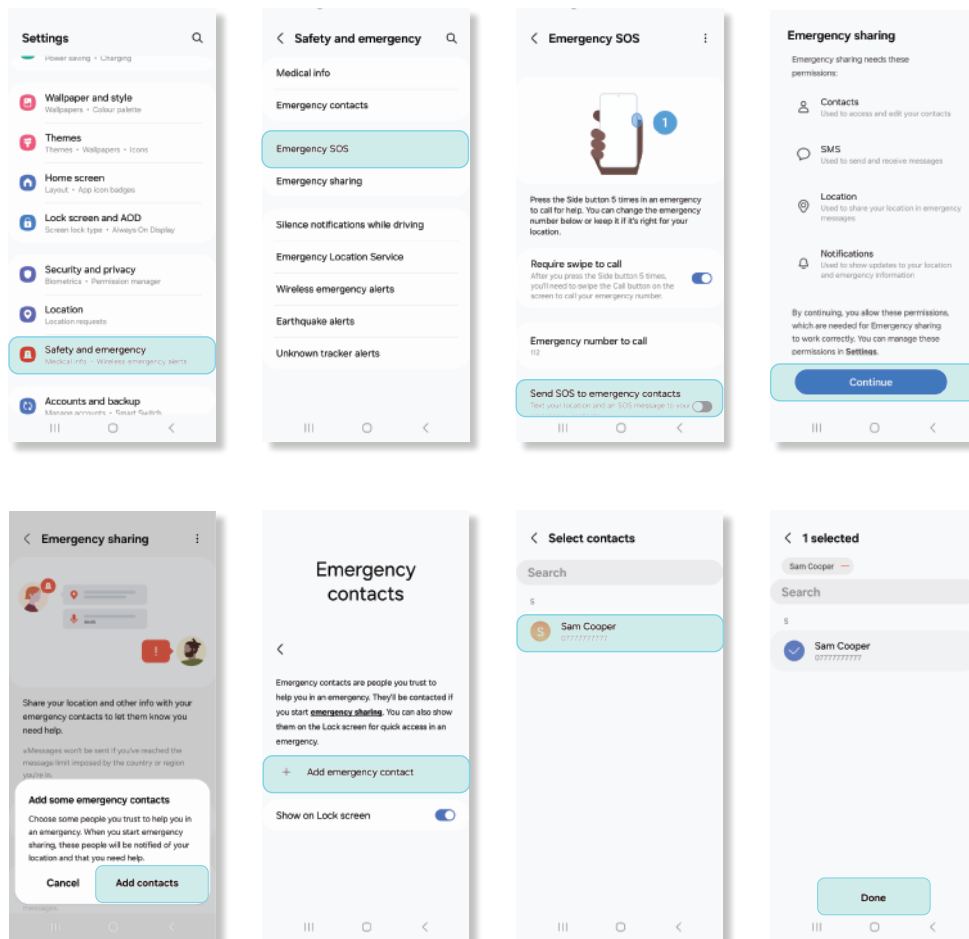
Galaxy smartphones and smartwatches have an SOS messages feature built-in, that allows you to reach out for help if you find yourself in a situation where you do not feel safe and need to raise an emergency alert.

The SOS messages feature allows you to auto-call and message up to four designated contacts without having to dial them.



Once set up, you can raise an alert by clicking your lock button five times. This automatically sends an SOS message and a Google map link of your location to your designated contacts. The feature also shares pictures from both the front and rear cameras of your smartphone, as well as a five-second audio recording.

Please note: this feature is only available on Samsung Galaxy smartphone running on Android Nougat software and onwards.



I'm struggling with the set up. Who can I contact?

Please get in touch with us. We're here to help.

- Visit : www.samsung.com/uk/support/contact
- Call us : 0333 000 0333
- Live Chat : www.samsung.com/uk/support/chat-members
- Sign Language Support : www.samsung.com/uk/support/contact/accessibility