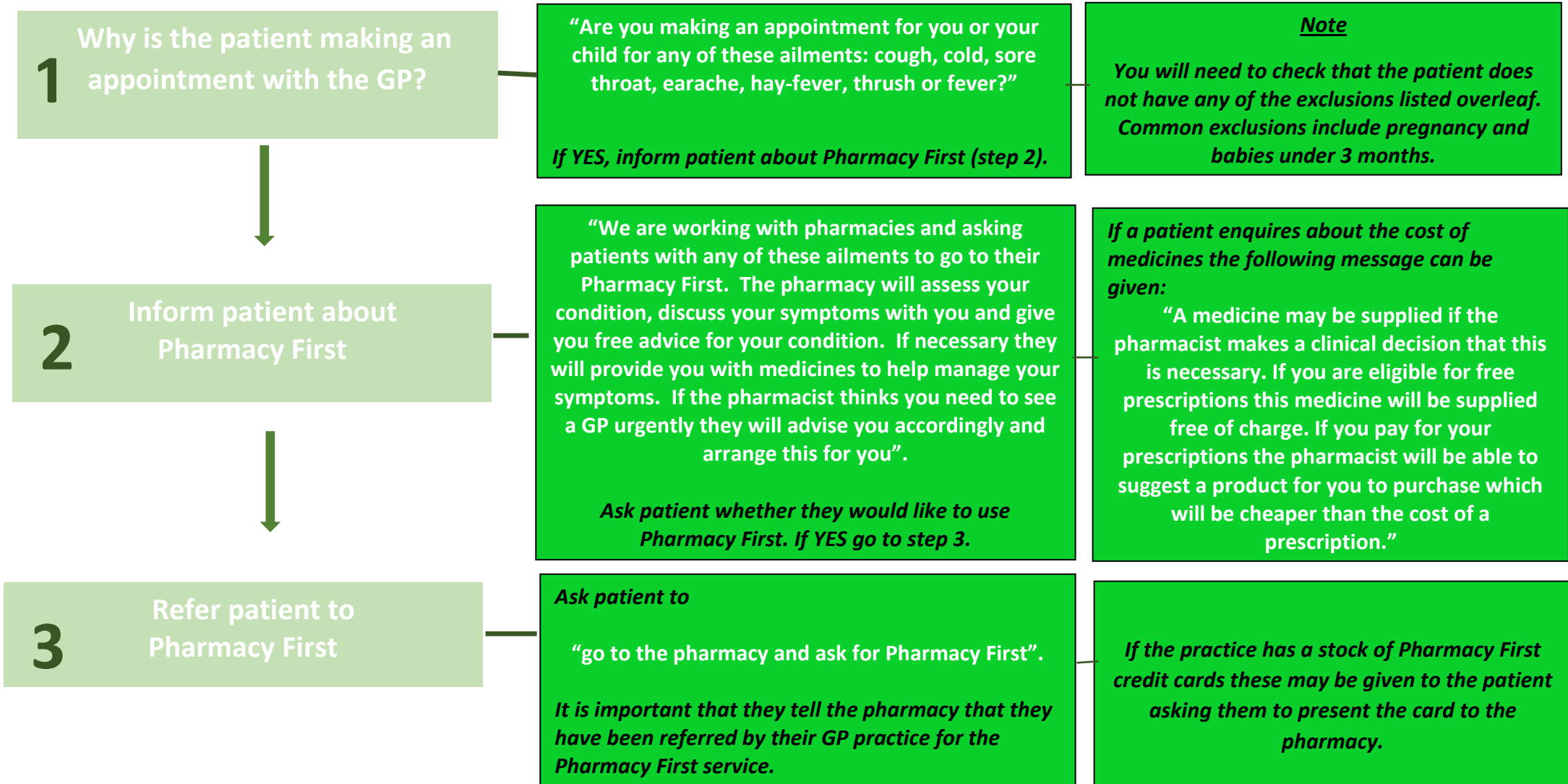


Referring Patients to Pharmacy First

A 3-Step Guide for Reception Staff in Leeds South & East



Referring Patients to Pharmacy First A 3-Step Guide for Reception Staff in Leeds South & East

Minor Ailments Included in Pharmacy First (with Common Exclusions)

ATHLETES FOOT – exclude diabetic patients, severe athletes foot and secondary infection.

BLOCKED NOSE – exclude recurrent nose bleeds

COLD - exclude very high temperature (fever) of 39°C (102.2F) or above or children under 3 months.

COUGH – exclude asthmatics with wheeze, chronic bronchitis, difficulty in breathing, blood in sputum, cough over 3 weeks duration.

EARACHE – exclude children under 3 months and earache lasting more than 24 hours despite pain relief or lasting more than 48 hours.

HAY FEVER – exclude patients under 2 years, pregnancy, patients with hay fever medications on repeat prescription.

HEADACHE – exclude children under 3 months, patients who have had a recent head injury (in the last 14 days), slurred speech or confusion in the patient.

HEAD-LICE – exclude children aged under 6 months

SORE THROAT – exclude if persisted for >1 week or patient unable to swallow.

SPRAIN OR STRAIN – exclude severe pain or pain with no obvious cause.

THREADWORMS – exclude patients with epilepsy, pregnancy and children under 2 years

TEETHING – exclude children under 3 months

TEMPERATURE/FEVER – exclude children under 3 months, temperature associated with a rash, patients with confusion, patients with repeated vomiting, high temperatures of 39°C (102.2F) or above

VAGINAL/PENILE THRUSH – exclude patients under 16 years and over 60 years, pregnancy, diabetic patients and patients not had thrush previously

PATIENTS WITH AN EXCLUSION SHOULD BE OFFERED A GP APPOINTMENT AND NOT REFERRED TO PHARMACY FIRST